

2021 Martin 242 Canadian Championships

SAILING INSTRUCTIONS (SIs)

The notation '[NP]' in a rule of the sailing instructions (SIs) means that a boat may not protest another boat for breaking that rule. This changes RRS 60.1(a).

1 RULES

- 1.1 The event is governed by the rules as defined in *The Racing Rules of Sailing*.

2 CHANGES TO SAILING INSTRUCTIONS

- 2.1 Any change to the sailing instructions will be posted before 0900 hours on the day it will take effect, except that any change to the schedule of races will be posted by 2000 on the day before it will take effect.

3 COMMUNICATIONS WITH COMPETITORS

- 3.1 Notices to competitors will be posted on the official notice board located at the bulletin board located at the top of the ramp at the north end of the Fisherman's Wharf at Cowichan Bay.
- 3.2 The race office is located at the vessel Gatsby on the Fisherman's Wharf.
- 3.3 On the water, the race committee intends to monitor and communicate with competitors on VHF radio on channel 71 (called the Regatta VHF hereafter).
- 3.4 The following communications may be made by the race committee on the Regatta VHF.
- *Boats finished on course*
 - *Informing competitors re the last race of the day*
 - *Health emergencies*
 - *Vessel traffic notifications*
 - *Etc.*

If the race committee displays flag L, alternate VHF channel 72 will be used.

4 CODE OF CONDUCT

- 4.1 [DP] Competitors and support persons shall comply with reasonable requests from race officials.

5 SIGNALS MADE ASHORE

- 5.1 Signals made ashore will be displayed from a pole located near the Notice Board.
- 5.2 When flag AP is displayed ashore, '1 minute' is replaced with 'not less than 30 minutes' in Race Signals AP.

6 SCHEDULE OF RACES

- 6.1 See NoR 6.

7 CLASS FLAGS

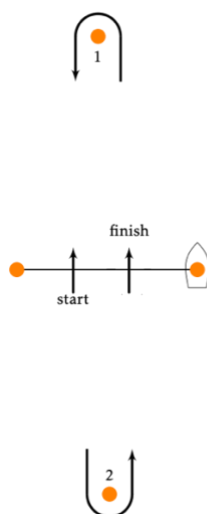
- 7.1 The Class flag (Warning Signal) is the Martin 242 class flag

8 RACING AREA

- 8.1 The racing area is Cowichan Bay and surrounding waters. SI Addendum A shows the location of the racing area.

9 COURSES

- 9.1 The diagram below shows the course, the order in which marks are to be passed, and the side on which each mark is to be left. The approximate course length is 4 miles.



- 9.4 Legs of the course will not be changed after the preparatory signal. This changes RRS 33.

10 MARKS

- 10.1 Marks are:
 - a) Windward: Large pink/orange ball
 - b) Leeward: Large pink/orange ball
 - c) Start/Finish: Big round red Scotsman

11 OBSTRUCTIONS

- 11.1 The rock identified in Addendum B is designated as an obstruction and

will have a warning buoy (in the shape of a large doll) placed above or in close proximity.

12 THE START

- 12.1 Races will be started using RRS 26 with the warning signal made 5 minutes before the starting signal.
- 12.3 The starting line is between a staff displaying an orange flag on the Signal Vessel at the starboard end and a staff displaying an orange flag on the Pin Vessel at the port-end.
- 12.5 If any part of a boat's hull is on the course side of the starting line during the two minutes before her starting signal and she is identified, the race committee will attempt to broadcast her sail number on the Regatta VHF. Failure to make a broadcast or to time it accurately will not be grounds for a request for redress. This changes RRS 62.1(a).
- 12.6 If any part of a boat's hull is on the course side of the starting line at her starting signal and she is identified, the race committee will attempt to hail her sail number. Failure to hail her number, failure of her to hear such a hail, or the order in which boats are hailed will not be grounds for a redress for request. This changes RRS 62.1(a).
- 12.7 A boat that does not start within 3 minutes after her starting signal will be scored Did Not Start without a hearing. This changes RRS A5.1 and A5.2.

13 CHANGE OF THE NEXT LEG OF THE COURSE

- 13.1 To change the next leg of the course, the race committee will move the original mark or the finishing line to a new position.

14 THE FINISH

- 14.1 The finishing line is between a staff displaying an orange flag on the Signal Vessel at the starboard end and a staff displaying an orange flag on the Pin Vessel at the port-end.

15 PENALTY SYSTEM

- 15.1 See NoR 9.

16 TIME LIMITS [AND TARGET TIMES]

- 16.1 The Target Mark 1 Time Limit, Race Time Limit (see RRS 35), and the Finishing Window are shown in the table below.

Mark 1 Time Limit	Race Time Limit	Finishing Window
45 minutes	90 minutes	7 minutes

- 16.2 If no boat has passed the first mark within the Mark 1 Time Limit, the race will be abandoned.
- 16.3 The Finishing Window is the time for boats to finish after the first boat sails the course and finishes. Boats failing to finish within the Finishing

Window, and not subsequently retiring, penalized or given redress, will be scored Time Limit Expired (TLE) without a hearing. A boat scored TLE shall be scored points for the finishing place [one][two – RRS A5.3] more than the points scored by the last boat that finished within the Finishing Window. This changes RRS 35, A5.1, A5.2 and A10.

16.4 Failure to meet the Target Time will not be grounds for redress. This changes RRS 62.1(a).

17 HEARING REQUESTS

17.1 The protest time limit is 60 minutes after the last boat finishes the last race of the day or the race committee signals no more racing today, whichever is later. The time will be posted on the official notice board.

17.2 Hearing request forms are available from the race office at Gatsby or on the Official Notice Board.

17.3 Notices will be posted no later than 30 minutes after the protest time limit to inform competitors of hearings in which they are parties or named as witnesses. Hearings will be held in the protest room, located at Gatsby, beginning at the time posted.

18 SCORING

18.1 See NoR 10.

18.2 Rule A5.3 applies.

19 SAFETY REGULATIONS

19.1 [DP] A boat that retires from a race shall notify the race committee at the first reasonable opportunity.

20 REPLACEMENT OF CREW OR EQUIPMENT

20.1 See IMCA Rule 3.7.6

21 EQUIPMENT AND MEASUREMENT CHECKS

21.1 A boat or equipment may be inspected at any time for compliance with the class rules, notice of race and sailing instructions.

22 OFFICIAL VESSELS

22.1 Official vessels will be identified as follows:

Boat Role	Name – Description
Signal Vessel	"Gatsby" – 37' Monk-Designed Tollycraft
Pin Vessel	15' Fiberglass boat or similar
Markset	26' Aluminum boat

23 TRASH DISPOSAL

23.1 See RRS 47.

24 HAUL-OUT RESTRICTIONS

24.1 See NoR 11.



25 DIVING EQUIPMENT AND PLASTIC POOLS

25.1 See NoR 12.

26 PRIZES

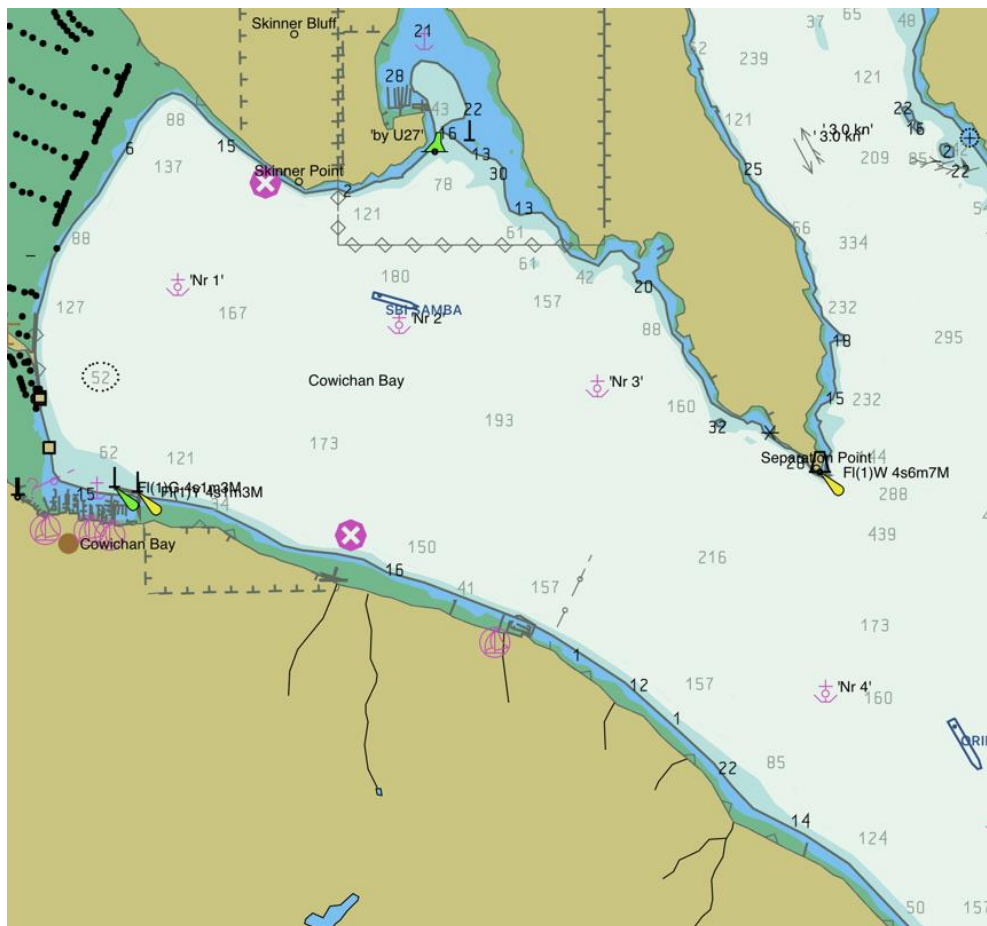
26.1 See NoR 15.

27 RISK STATEMENT

27.1 See NoR 13.

SI ADDENDUM A

SAILING AREA



SI ADDENDUM B

POSITION OF LARGE ROCK MARKED ON THE COURSE WITH A BUOY.



SI ADDENDUM C

SANSUM NARROWS CURRENT DATA

Saturday

Sansum Narrows

Sat -- 12:36 AM	1.22 knots Max Flood
Sat -- 2:17 AM	-0.00 knots Slack
Sat -- 3:23 AM	Moonrise
Sat -- 5:44 AM	-2.95 knots Max Ebb
Sat -- 6:35 AM	Sunrise
Sat -- 9:52 AM	0.00 knots Slack
Sat -- 1:01 PM	4.01 knots Max Flood
Sat -- 4:08 PM	-0.01 knots Slack
Sat -- 7:23 PM	Moonset
Sat -- 7:49 PM	Sunset
Sat -- 8:05 PM	-2.75 knots Max Ebb
Sat -- 11:24 PM	0.01 knots Slack

Tide / Current data from XTide NOT FOR NAVIGATION

Sunday

Sansum Narrows

Sun -- 1:19 AM	1.71 knots Max Flood
Sun -- 3:10 AM	-0.01 knots Slack
Sun -- 4:37 AM	Moonrise
Sun -- 6:27 AM	-3.26 knots Max Ebb
Sun -- 6:37 AM	Sunrise
Sun -- 10:36 AM	0.00 knots Slack
Sun -- 1:42 PM	4.36 knots Max Flood
Sun -- 4:43 PM	-0.01 knots Slack
Sun -- 7:47 PM	Sunset
Sun -- 7:48 PM	Moonset
Sun -- 8:29 PM	-2.97 knots Max Ebb
Sun -- 11:55 PM	0.01 knots Slack

Tide / Current data from XTide NOT FOR NAVIGATION

SI ADDENDUM D

SIGNAL FLAGS (from the 2021-2024 RRS)

RACE SIGNALS

The meanings of visual and sound signals are stated below. An arrow pointing up or down (↑ ↓) means that a visual signal is displayed or removed. A dot (•) means a sound; five short dashes (-----) mean repetitive sounds; a long dash (—) means a long sound. When a visual signal is displayed over a class flag, fleet flag, event flag or race area flag, the signal applies only to that class, fleet, event or race area.

Postponement Signals



↑ • • • ↓ •

AP Races not started are *postponed*. The warning signal will be made 1 minute after removal unless at that time the race is *postponed* again or *abandoned*.



↑ • •

AP over H Races not started are *postponed*. Further signals ashore.



↑ • •

AP over A Races not started are *postponed*. No more racing today.

AP over a Numeral Pennant 1-9

Postponement of 1-9 hours from the scheduled starting time.



Pennant 1 ↑ • • ↓ •



Pennant 2 ↑ • • ↓ •



Pennant 3 ↑ • • ↓ •



Pennant 4 ↑ • • ↓ •



Pennant 5 ↑ • • ↓ •



Pennant 6 ↑ • • ↓ •



Pennant 7 ↑ • • ↓ •



Pennant 8 ↑ • • ↓ •



Pennant 9 ↑ • • ↓ •

Abandonment Signals



↑ • • • • ↓ •

N All races that have started are *abandoned*. Return to the starting area. The warning signal will be made 1 minute after removal unless at that time the race is *abandoned* again or *postponed*.



↑ • • • •

N over H All races are *abandoned*. Further signals ashore.



↑ • • • •

N over A All races are *abandoned*. No more racing today.



↑ —

V Monitor communication channel for safety instructions (see rule 37).

Preparatory Signals



↑ • • ↓ —

P Preparatory signal.



↑ • • ↓ —

I Rule 30.1 is in effect.



↑ • • ↓ —

Z Rule 30.2 is in effect.



↑ • • ↓ —

U Rule 30.3 is in effect.



↑ • • ↓ —

Black flag. Rule 30.4 is in effect.

Recall Signals



↑ •

X Individual recall.



↑ • • • ↓ •

First Substitute General recall. The warning signal will be made 1 minute after removal.



↑ • •

S The course has been shortened. Rule 32.2 is in effect.

Shortened Course

Changing the Next Leg



— — — —

C The position of the next *mark* has been changed.



to starboard;



to port;



to decrease the length of the leg;



to increase the length of the leg.

Other Signals



↑ •

L Ashore: A notice to competitors has been posted. Afloat: Come within hail or follow this vessel.



— — — —

M The object displaying this signal replaces a missing *mark*.



↑ •

V Wear a personal flotation device (see rule 40).



(no sound)

Orange flag. The staff displaying this flag is one end of the starting line.



(no sound)

Blue flag. The staff displaying this flag is one end of the finishing line.

WE WOULD ALSO LIKE TO TAKE THIS OPPORTUNITY TO THANK OUR GENEROUS SPONSORS:



CynergyResearch.com

Global Equity Analysis & Model Portfolio

"Focused on the biggest, best, most resilient, profitable and growing publicly-traded companies in the world"

